









## THE YATELEY MAY FAYRE



*Half-time change of locomotives  
For once, Derek strolls ahead leaving the pushing to Dave Pritchard, Paul Konig, Pete Starr and Tony Weeden*

that caught passengers and driver alike enjoying the moment - and proving again that Dave can smile.



Photos John Keane

This was a long day for members who stayed the course, but netted about twice the income of a Pinewood birthday party. Thanks to Dave Pritchard for organising the event and the hard-working members who turned out to make it happen.

## THE FORMAL OPENING OF THE LOOP

June 17<sup>th</sup> saw the official opening of the new route over the bridge (see the map in issue 13) by Wokingham Borough Mayor, Councillor Annette Drake, accompanied by her 10-year-old granddaughter Evie. The weather treated us well with gentle sunshine for most of the day and no rain showers.

Councillor Drake readily accepted the offer to drive a train and enthusiastically absorbed the driver training from Dave Curtis, watched by granddaughter Evie.



Photo JRK

Dave's Romulus, specially cleaned for the occasion, was sufficiently well behaved that hardly a smut dared to land on the Mayor's elegant suit.

*Right: Cutting the ribbon at the bridge. (Floral gloves thoughtfully provided by Dave Curtis)*

Photo Clare Keane



Photo John Keane



Following the formal cutting of the ribbon, Councillor Drake drove the train for a full circuit of the railway and evidently enjoyed the experience, being heard to comment that "One doesn't often get the chance to drive a train" and "I've not had so much fun for ages."

Members, in their turn, admired the confident handling of the locomotive and her willingness to risk a bit of oil and coal dust.



*The Mayor makes a nifty getaway after cutting the ribbon on the bridge.*

Photo Clare Keane



*Dave Curtis relaxes as the Mayor drives safely back to the station with passengers Evie, Maureen Archer, Maureen's daughter Nadine carrying Holleigh, Dave Simmonite's grandson Mark and Dick Woodruff.*

Photo Paul Archer



Photo Clare Keane



*The celebration cake, decorated with the Pinewood Railway logo.*

Councillor Drake and Evie cut the celebration cake (made by Maureen Archer and iced by her daughter Nadine). It was consumed, along with glasses of champagne, to round off an enjoyable event for members and guests alike.



Photo Clare Keane

## AN UNUSUAL BREAKDOWN

It was tempting fate for someone to point out that pictures of Tony and his C19 had been unusually absent from the last few Newsletters.

On the next time out – the May public running day - Tony had just started his first, passenger hauling, run when he suffered an involuntary stop of impressive suddenness, providing the photo opportunity that probably was not in mind.

Nothing would persuade the coupled wheels to turn, under steam or by manual efforts.



Photos Paul Archer

*Dick's trolley demonstrates its value in dragging Tony's wheel-locked, disabled loco round the loop. ...assisted by members with broom handles*

Fortunately the running afternoon was just getting under way, so a large queue had not built up and the waiting passengers seemed to enjoy the spectacle of the C19 being ignominiously dragged back round the loop as much as the prospect of a ride.

Tony later traced the problem to one of the driving wheel axle boxes and a blocked oil feed. Perversely, it was the axle carrying the valve eccentrics, but Tony tells us he has now machined the box/axle and fitted an Oilite sleeve. He also took the opportunity to drill out the axle ends to provide alternative lubrication through the axle centre. Despite a brief further problem on the next time out, Tony was back in service for the July running day.

*(See the back cover for a picture of Tony and his C19 negotiating the new diamond crossing, earlier this year.)*

# LIVING WITH YOUR LATHE

*(Ivan Hurst has agreed to us proceeding with publication of this article, which he submitted before he departed for pastures new.)*

## 5 - VERNIER SCALE FOR TOP SLIDE ANGLE SETTING

### INTRODUCTION

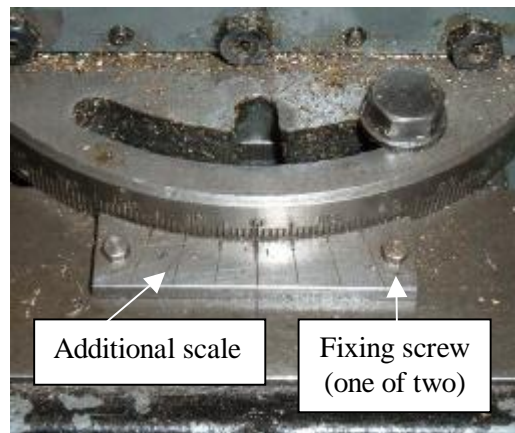
For short tapers, it is convenient to be able to set the Top Slide to the taper angle (ie one half of the included angle).

The ML7 has a scale around the Top Slide base, which is calibrated in degrees, and a fiducial mark engraved on the Cross Slide. This is good, but a fractional part of a degree is pure guesswork. A “Vernier” Scale can be fitted to the Cross Slide that will enable accurate setting to  $\frac{1}{4}^\circ$ , or  $15'$ , and enables estimates to be made more easily to smaller angles. I put “Vernier” in inverted commas, because it is not a classical “10 divisions in the space of 9” type, but works on a similar principle.

### THE VERNIER SCALE

This time, I know exactly where the idea came from - my son. He came up with the idea and made the scale many years ago, and I have not found any good reason to change it.

The photograph shows the arrangement. A piece of  $\frac{1}{8}$ ” sheet is scribed with a series of radial lines at  $5^\circ 15'$  intervals, by means of a rotary table. In total, there are seven such lines, at  $0^\circ$  and at  $\pm 5^\circ 15'$ ,  $10^\circ 30'$  and  $15^\circ 45'$ . The plate is then shaped to the appropriate radius to fit around the base of the Top Slide.



The Top Slide is set by means of a DTI (Clock) to be parallel to the Lathe axis, following which the Scale is aligned with the zero on the Top Slide base. It is then fastened down by two screws, the holes being deliberately left oversize to allow final adjustment.

It will be seen that it is now possible to read  $15'$  intervals directly, and interpolate smaller values. It also gives seven chances to set the zero

position accurately - eagle-eyed readers will see that it is not quite set correctly in the photograph, as evidenced by the asymmetric splits on corresponding plus and minus marks.

Afterthought: With a blinding glimpse of the obvious, it would have been better not to have attempted to emphasise the marks in the vicinity of the base with a scribe - this is overcome on the original by sighting along the lines with the eye line nearly horizontal, but it would be better not to have to do so. One of these days, I might get round to making a new one.....

## NEW LOCOS AND ROLLING STOCK

(Some of the stock recently built or acquired by members)

### Paul's C19 (The black one)

Having acquired a 7.1/4” King – and promptly dismantled it (see issue 13) – Paul Konig again claims a place in this section by acquiring a 7.1/4” C19 at auction. His story is that he went to buy a trailer and came back with a C19! We are uncertain whether to reserve space in the next newsletter, to report Paul's third acquisition, or whether to put him in protective custody before the next auction.



*Photo Clare Keane*

*Paul's C19 - First outing at Pinewood*

Engineering circa 1985, though a prototype seems to have existed for several years previously; the design was later acquired by HRM/Reeves). Paul's model bears the number 391 on the cab side and smoke box – the latter sometimes the right way up!

The original 2-8-0s for the American 3ft gauge, Denver and Rio Grande Railway were built in the early 1880s and later reclassified as C19s. An example of a C19 (in preservation at the Colorado Railway Museum) is the Baldwin built, number 406, built in 1881 and renumbered 346 in the 1920s.

Paul's model is built to the well-established design of John Milner (first offered commercially by Milner



The loco received its first steam test in June 2006 and is said to have been running at a Society in Essex during the remainder of the year.

However, this has not stopped Paul from taking large parts of the loco to pieces. The work started innocently enough (remaking a faulty whistle valve) but has progressed to adjusting the regulator (it was found that uncovering a one inch by half inch slot, with no starting valve, is not conducive to easy starting/controlled running!).



*Paul releasing the wheels (The safety officer is lurking nervously in the background)*

The July Running Day saw the most extreme work so far; ‘swapping’ the rearmost two axles such that the flangeless set was not at the back – the loco can now reverse round corners. Unfortunately that afternoon’s running was curtailed by a lubricator problem, but the loco will be back in action for the forthcoming running days. It is possible that Pinewood is the only UK railway to have two 7.1/4” gauge C19s owned by members.

Resolution of these problems has very much been a ‘team effort’ and Paul says he is extremely grateful to those who have given their time and efforts to help with these jobs – and hopes they enjoy driving the loco too!



*Trevor assisting with the wheel change.*

Photos David Bailey

generously offered that the loco can be driven in his absence, by prior arrangement, if we are pressed for motive power.

No doubt the loco will run well when steamed next time and Paul will have no reason to dismantle anything else. With another large engine in the club, this second C19 should help ease motive power issues at Public Running days and relieve some of the pressure on individual engines and owners. Paul has

## Dave’s New Wagons



Dave Elen has added to the fleet of working rolling stock by the addition of two useful open wagons. Made by Phil Wheeler of Bickton Narrow Gauge, Dave arranged for his to come with a double floor so that they are useful flat trucks when the bodies are lifted off.

Dave is currently painting them. In the photograph, the black is yet to be applied to the top and bottom ironwork of the bodies. The trucks are common user but distinguished by Dave’s usual DVR (Dore

Valley Railway) lettering (He will explain if you insist.).

## WELSH HIGHLAND VISIT

On the evening of 13th June, we received a further visit from members of a branch of the Welsh Highland Railway Society. In spite of the forecast of wet weather, the rain held off long enough for our visitors to take a few rides behind Dave Curtis’ 7.1/4” gauge Romulus and David Simmonite’s 5” gauge Metropolitan.



*Above: Dave Curtis driving Romulus*



*Top right: David Bailey driving David Simmonite’s Metropolitan*



*Bottom right: David Simmonite driving his Metropolitan.*

## DIARY DATES

External events are in **bold text**.

| DATE                  |   | EVENT  |
|-----------------------|---|--|
| <b>AUGUST 2007</b>    | Sunday 5 <sup>th</sup>                              | Members' Running, 11.00-16.00  |
|                       | Sunday 19 <sup>th</sup>                             | Birthday Party, 11.00-13.00 – Confirmed<br>Public Running, 13.30-16.00   |
| <b>SEPTEMBER 2007</b> | Sunday 2 <sup>nd</sup>                              | Birthday Party, 11.00-13.00 – Confirmed<br>Members' Running, 13.30-16.00 |
|                       | Sunday 16 <sup>th</sup>                             | Birthday Party, 11.00-13.00 – Confirmed<br>Public Running, 13.30-16.00   |
|                       | Friday 7 <sup>th</sup> to<br>Sunday 9 <sup>th</sup> | <b>Centenary M E Exhibition, Royal Ascot<br/>Grandstand</b>              |
| <b>OCTOBER 2007</b>   | Sunday 7 <sup>th</sup>                              | Members' Running, 11.00-16.00  |
|                       | Sunday 21 <sup>st</sup>                             | Birthday Party, 11.00-13.00 - Confirmed<br>Public Running, 13.30-16.00   |
| <b>DECEMBER 2007</b>  | Sunday 2 <sup>nd</sup>                              | Santa run  |
|                       | Sunday 9 <sup>th</sup>                              | Santa run  |

E&OE Please check dates of external events before travelling

## THIS AND THAT

(Late additions, items for sale and miscellaneous)

### ELECTRICAL INSPECTION

We have received a copy of the electrical safety check report, produced by external inspectors at the instigation of our landlords. As confidently expected, no issues were raised in respect of the electrical installations for the steaming bay, the ticket office, the chalet and the signal box. Minor recommendations were made to provide better physical protection for one of the lighting cables in the loco shed and to replace an open-backed batten lamp holder, also in the loco shed.

### NEWSLETTER LIBRARY

It is proposed to set up a library of past copies of the (old and new) Pinewood Express, in the chalet. We have copies of all of the 'New' expresses back to January 2004. Very regrettably such copies as there were of the earlier Pinewood Express seemed to have been lost somewhere in the handover after Ivan departed. It is pleasing to report that thanks to Mike Cole rescuing them from likely oblivion during shed tidying, we also have the (Old) Pinewood Expresses from No.1 in 1985 to No. 50 in 2000.

### APPRECIATION OF 'BIG' DAVE

From even a casual glance at recent issues of the New Pinewood Express, it is easily apparent the extent to which Dave Curtis has been relied upon to supported events of our Society - as indeed he has done for many years past. In recognition of this and, particularly, his representation of the Society during the opening of the new loop, the Committee were pleased to present him with an inscribed book of photographs as a permanent reminder of his valued contribution – which we hope will continue for many more years.



### A NEW NAME FOR PAUL'S C19

Having called his loco many things over the past couple of months (most unsuitable for print) Paul is looking for a new official name for his C19. Suggestions to the Editor or direct to Paul [paul.konig@talk21.com] Amusing suggestions welcome, but a sensible one is needed too! The outcome will be reported in a future issue.



Photo John Keane

*Tony and his C19 on the new diamond crossing. April 2007*